

# 2024 Street & Utility Improvements Project Update #1 – July 31, 2024

## Construction schedule:

Start: July 2024  
Finish: September 2025  
Final Paving: Summer 2026



## Contacts:

### **Bolton & Menk, Inc.**

1960 Premier Drive  
Mankato, MN 56001  
Phone: 507-625-4171  
Fax: 507-625-4177  
[www.bolton-menk.com](http://www.bolton-menk.com)

### **Jason L. Femrite, P.E.**

(Arlington Consultant City Engineer)  
Work: 507-625-4171 ext. 2288  
E-mail: [Jason.Femrite@bolton-menk.com](mailto:Jason.Femrite@bolton-menk.com)

### **Caleb Ward**

(Construction Representative)  
Cell Phone: 507-613-8795  
E-mail: [Caleb.Ward@bolton-menk.com](mailto:Caleb.Ward@bolton-menk.com)

### **City of Arlington**

204 Shamrock Drive  
Arlington, MN 55307  
Jessica Steinke  
(City Administrator)  
Office: 507-964-2378  
[jsteinke@arlingtonmn.gov](mailto:jsteinke@arlingtonmn.gov)

### **Holtmeier Construction, Inc.**

Matt Schneider  
(Project Superintendent)  
3301 3<sup>rd</sup> Avenue  
Mankato, MN 56001  
Office: 507-389-9112  
[Mschneider@holtmeierinc.com](mailto:Mschneider@holtmeierinc.com)



## Overview

The City of Arlington is undertaking the reconstruction of the 2024 Street & Utility Improvements. Figure 1 shows the overall project areas of complete street and utility reconstruction. Figure 2 is a construction progress map that will be updated as construction continues.



## Access



## Project Timeline

In March of 2024, competitive bids for construction were received and the project was awarded to Holtmeier Construction, Inc. of Mankato. Phase 1 construction will begin during the week of August 5<sup>th</sup> on the following roadways:

- W Alden Street from 7 ½ Ave NW to 5<sup>th</sup> Ave NW
- 7<sup>th</sup> Ave NW from W Main St to W Alden St

A temporary water supply pipe will be installed during the week of August 5<sup>th</sup>. Please use caution to avoid damaging the water supply pipe with lawn care equipment. Pavement removals are scheduled to occur during the week of August 12<sup>th</sup>, with underground utility construction to follow. It will likely take several weeks to complete underground and street construction on your block. You will not have continuous access to your driveway during this time. Once the Contractor has graded the street and placed a gravel surface, homeowners may again use their driveways until crews arrive to construct concrete curb and gutter and driveways.

The anticipated completion date for most of the work is September 1, 2025, and the Contractor is expected to meet the completion date. Some items of work, such as the final layer of asphalt pavement, will be completed during the summer of 2026. Weather conditions can have a large impact on the progression of street and utility construction. Please be aware that all timelines and schedules are subject to change as weather conditions vary.



## Updates

**Informational updates**, such as this one, will be sent periodically throughout the project. If you have questions or concerns at any time, please contact **Caleb Ward** using the information listed. These updates can be found on the City website listed below. **If you would like to receive these updates via email, please email [Caleb.Ward@bolton-menk.com](mailto:Caleb.Ward@bolton-menk.com) and ask to be included in the Arlington project updates.**

**Text Message updates:** You can sign up for text message updates by texting “@2024arli” to the number “81010”. This is highly recommended. If prompted, please use your first name and house number when creating your username (ex: Bob 101 Alden). The platform used for these updates is called *Remind* which is a school-based application and will ask for your birth date to verify that you are at least 13 years of age. Please contact Caleb Ward with any questions using the information listed. **An example sign-up can be found on page 3.**

City of Arlington website:

[www.arlingtonmn.com/street-and-utility-project/](http://www.arlingtonmn.com/street-and-utility-project/)





## Sewer and Water

### Disruptions to Sewer and Water Service

Water and sewer service will mostly be provided at all times; however, planned shutdowns and disruptions will occur. Residents will be provided notice prior to the anticipated shutoff periods. Your residence will be connected to an above ground temporary water supply system until the new piping is installed and tested. You may notice a slight increase in the temperature of your tap water while connected to the temporary water supply line. Please use care when mowing around the temporary water supply pipe.

### Service Line Connections

Sewer and water services will be constructed as close as possible to your property line and reconnected as part of the City project. You will be notified if your services appear to be in poor condition beyond the connection point. Please contact the Construction Representative if you plans to privately reconstruct the remainder of your services in conjunction with this project.

Please contact the Construction Representative if you have questions or encounter issues pertaining to your sewer and water service.



## Alert

### Private Items in Right-of-Way

If you have items such as landscaping, shrubs, bushes, flowers, sheds, irrigation systems, dog fences, etc. within the right-of-way, it is not the contractor's responsibility to work around them. The property owner is responsible for securing these private facilities

and moving them, if necessary, to allow the project to be constructed. Neither the contractor nor the City is responsible for damages incurred to private facilities in the right-of-way. Any underground facilities, such as irrigation lines and heads, dog fences, etc., should be located and marked so they are readily visible.



## Construction

### Work Area

It is very common on these types of projects that area residents (especially children) become quite curious about the work the Contractor is performing. We ask that you please be respectful of and stay well clear of construction zones. Many hazards and dangers exist from heavy machinery, trenches, loose material, material stockpiles, construction supplies, confined spaces, hot asphalt, etc. and often are not recognizable by the general public. The Contractor has responsibility to ensure safety on the project and within the construction area. Any direction from the Contractor regarding safety must be followed; likewise, if you observe an unsafe condition, please report it to the Construction Representative immediately.

### Garbage & Recycling

Residents should write their address on the lid of their garbage & recycling receptacles. Wheel your receptacles to their normal pick-up location **by 7:00 AM on the day of the scheduled pick-up**. The contractor will move the receptacles to a location accessible by the sanitation company. After pick-up, the contractor will return the receptacles to your property.

### Mail

If your mailbox is attached to your house, there will be no change in delivery methods. If your mailbox is detached from your house and adjacent to the street, it will be temporarily relocated throughout the duration of construction to allow access for post office delivery vehicles. Residents will be notified of the whereabouts of this temporary location. Please contact the construction representative with any questions.

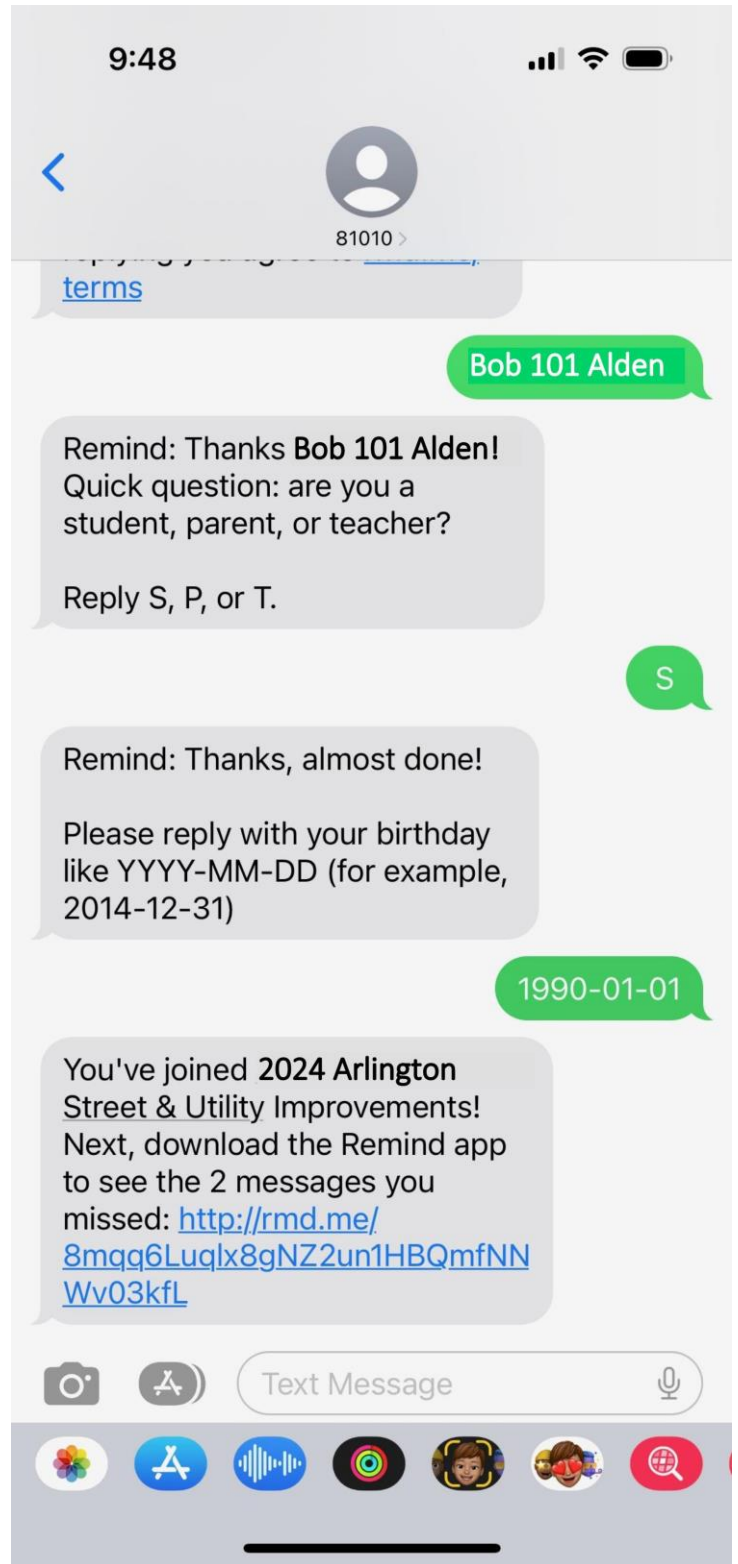
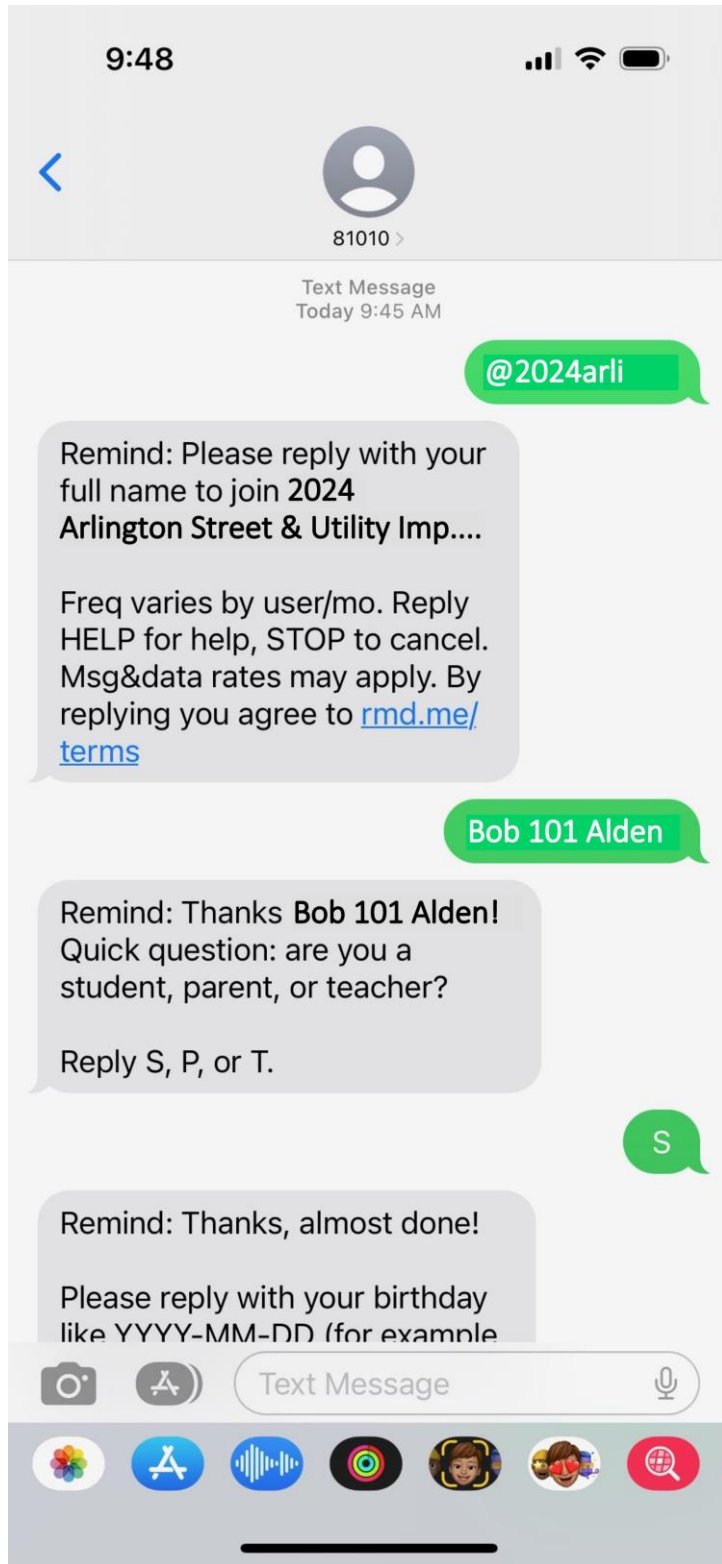
### Turf Restoration

In the fall, the Contractor will restore grass following underground and street construction. The new turf will be seeded and blanketed. For a period of time the seeded areas will be watered and maintained by the Contractor. However, if homeowners do their part to help water and weed these areas, the new grass is more likely to thrive. After the Contractor's maintenance period, it becomes the property owner's responsibility to water, mow, and provide other necessary care. Mowing too soon or too short can damage or even kill new grass. Set the mower at its highest level and never cut the new grass shorter than 3 inches.





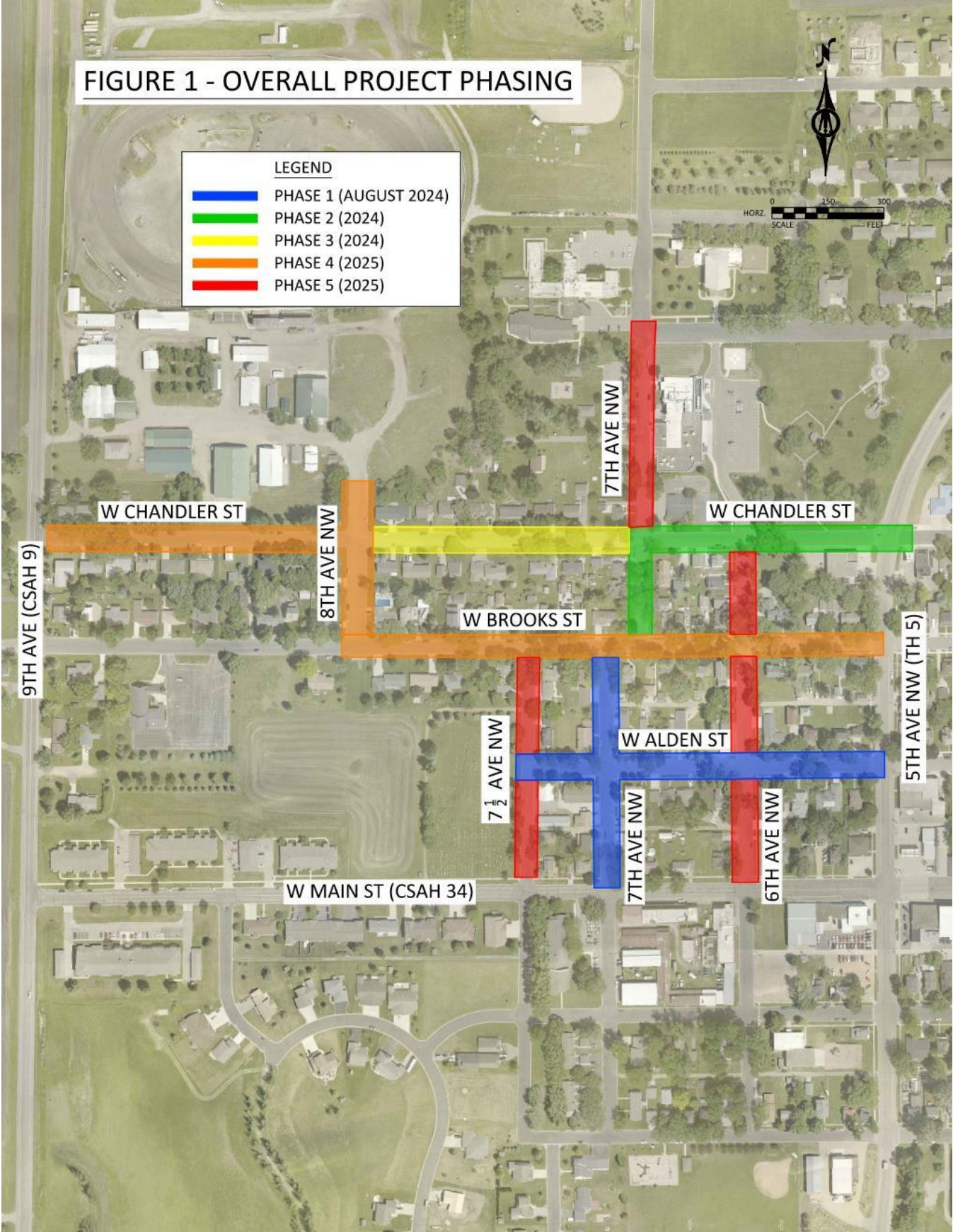
## Example Registration for Text Message Sign-Up







Map – Overall Project Phasing







## Map – Construction Progress Map

